

2006 LEXUS LS



Vehicle shown with available equipment.



## 2006 LEXUS LS



Vehicle shown with available equipment.

Lexus engineers scrutinized every automotive process and function when designing the LS. The status quo versions of features such as headlamps, cruise control and safety systems were cast aside and replaced with unconventional and greatly enhanced ones.

## 2006 LEXUS LS Interior



Engineers spent countless hours refining the cabin of the LS until it was among the quietest in the world. Every piece of bird's-eye maple or walnut that is selected for the interior must appear to be carved from the same respective tree so as not to interfere with nature's own harmonic balance. And supple, premium grade leather is meticulously scrutinized for blemishes before it ever reaches the cabin. Of course, comfort can also vary with the individual. Which is why the ergonomic driver's seat in the LS can be tailored in 14 ways and then committed to memory for easy one-touch recall. In the age of cramped and barren rear seats, designers of the LS took the opposite approach. Where every driver is a consummate host, providing their guests with a center console that allows them to control such available amenities as heating and cooling seats, reclining seatbacks, audio and climate control functions, and even a built-in massager. Should your guests desire a chilled water at a moment's notice, a cool box, conveniently located between the seats, is available.



Vehicle shown with available equipment.

## 2006 LEXUS **LS** Performance



Vehicle shown with available equipment.

Rest assured, the LS was designed to be as invigorating as it is indulgent. Powered by a potent 4.3-liter V8 engine, the LS uses Variable Valve Timing with intelligence (VVT-i) technology to ensure that the maximum amount of power is available at any given point. A considerable task considering the LS produces 278 horsepower<sup>1</sup> and can rocket from 0 to 60 in less than six seconds.<sup>12</sup> Of course, such brute strength in a sedan would normally invite the nuisance of wind noise caused by less than optimal aerodynamics. To avoid this consequence, the LS was tested inside the same wind tunnels used to develop bullet trains. The resulting drag coefficient of 0.26 is among the best in its category. Certainly, premium leathers and fine woods have their place in the realm of luxury. As well they should. In fact, with available antique walnut wood that grows gradually darker toward the edges, the LS interior can be said to have a greater resemblance to a fine wood instrument than that of your typical luxury automobile.

But such luxuries should never exist at the sacrifice of heart-pounding exhilaration. To that end, the LS includes a sixth gear for greater acceleration and responsiveness, as well as sequential shift, which allows you to manually shift gears for a more engaging driving experience. You never know what type of road you'll find yourself traversing. To help accommodate for these uncertainties, the LS is available with an assortment of suspensions. The available Adaptive Variable Air Suspension (AVS) feature provides you with two modes: Normal, for a luxurious cruise feel, and Sport, for tighter and more precise handling. For those who desire an even greater degree of road feel and the most dynamic handling, a Euro-tuned Sport Suspension is also available. Perhaps even more impressive than the suspensions is the chassis where they reside. Developed using a computer program originally written for NASA, the chassis of the LS promises an exceptional performance on virtually every road.

<sup>12</sup> See page 15 for more information.

## 2006 LEXUS LS Technology



The SmartAccess system is one of the most courteous amenities offered in the automotive category. When the LS detects the SmartAccess key device, it begins to function before the driver even arrives at the vehicle. Puddle lamps slowly illuminate from underneath the side mirrors, casting light on potential obstacles near the vehicle and effectively ushering the driver to the door. Inside, soft light illuminates the cabin and the engine can be started without the driver ever needing to remove the key from their pocket or purse.

Of course, the SmartAccess system is just one of the many accommodating features available on the LS. Another, the Homelink® system, enables you to control a variety of home electronic systems, from entry gates to interior lighting, while comfortably ensconced inside the cabin of the LS. Other thoughtful features include a power rear sunshade and an auto-dimming rearview mirror.



The climate-control system includes intelligent air vents that automatically direct cool air to warm spots in the cabin so that the desired temperature remains consistent throughout. Available perforated leather-trimmed seating not only breathes with your skin, it also has the ability to warm or cool you. And, to preserve a pristine driving environment, an available air purification system goes so far as to use ultraviolet light to break down and reduce harmful pollutants.

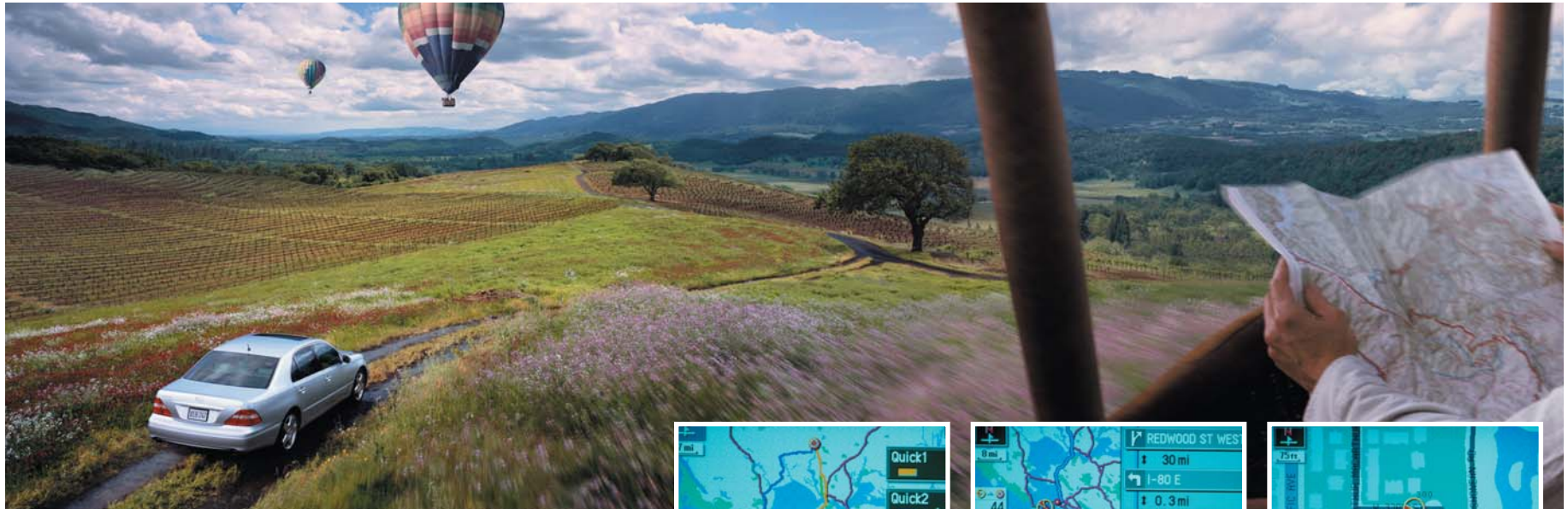
## 2006 LEXUS LS Mark Levinson® Audio System



The designers of Mark Levinson,<sup>®</sup> the premier name in home audio systems,<sup>3</sup> were originally hesitant to venture into the automotive arena. They had yet to find an automobile cabin quiet enough to accommodate their high-end systems. That is until they found the LS. Through 11 strategically placed speakers, the available voice-activated system produces three-dimensional sound that is virtually indistinguishable from a live performance. The designers even went so far as to include a feature that enables you to tailor the system performance based on the current arrangement of passengers in the cabin.

<sup>3</sup>See page 15 for more information.  
Vehicle shown with available equipment.

## 2006 LEXUS LS DVD Navigation System, Backup Camera and Bluetooth®



As part of the available voice-activated DVD Navigation System (NAV),<sup>4</sup> the backup camera<sup>5</sup> feature utilizes a discreetly placed lens to display a wide-angled color view on the in-dash NAV screen whenever the vehicle is placed in reverse. The NAV system can also identify over five million points of interest, from fuel stations to ATM machines, as well as respond to over 100 spoken commands. And, should you carry a Bluetooth® enabled cell phone,<sup>6</sup> initiating a hands-free call can be as simple as pressing a button.

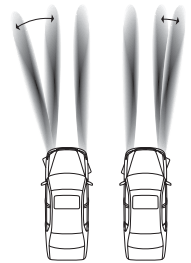
<sup>4,5,6</sup> See page 15 for more information.  
Vehicle shown with available equipment.

## 2006 LEXUS LS Safety



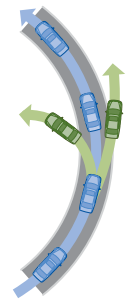
Vehicle shown with available equipment.

Unwilling to accept the limitations of conventional headlamps, Lexus engineers designed the LS with an Adaptive Front Lighting System (AFS). Taking into account such factors as speed and steering angle, the High-Intensity Discharge (HID) headlamps



on the LS are designed to rotate into a curve up to 15 degrees on the left and 5 degrees on the right. Available Dynamic Laser Cruise Control<sup>7</sup> uses laser technology to detect and maintain a pre-set following distance from a car traveling ahead, even applying the brakes if necessary. And an available Pre-Collision System (PCS)<sup>8</sup> uses radar waves to help determine in advance if a collision is unavoidable. If so, the front seatbelts automatically retract and Brake Assist<sup>9</sup> helps provide a greater braking force the moment you touch the pedal.

On the LS, numerous safety systems have been implemented. In the case of a slick road, Vehicle Stability Control (VSC)<sup>10</sup> can sense the onset of a loss of traction in a turn and automatically adjust the throttle and brakes to help keep you on course. Traction Control (TRAC) can determine if a rear wheel is beginning to slip and immediately redistribute power to the wheel that can provide better grip. And, because driving in inclement weather requires the utmost attention, the LS is equipped with windshield wipers that automatically activate and adjust their speed based on the amount of rainfall.



<sup>7,8,9,10</sup> See page 15 for more information.



## 2006 LEXUS LS Safety (Continued)



Taking into account such factors as the severity of impact and the position of the driver's seat on its track, the driver's dual-stage airbag<sup>11</sup> is designed to deploy at one of three speeds so that the appropriate level of restraint is provided. In addition to the front passenger's own dual-stage airbag<sup>11</sup>, both front-seat occupants are protected by knee airbags and two types of side airbags<sup>11</sup>: a side curtain airbag<sup>11</sup> that extends across the side windows of the front and rear doors and a second set that is built into the front seats themselves. The LS frame is composed of reinforced steel and is specifically engineered with crumple zones in the front and rear that are designed to compress at a controlled rate to help absorb the force of impact.



Light-emitting diode (LED) brake lights are yet another example of the exemplary attention to detail found on the LS. Unlike conventional lightbulbs, LEDs illuminate brighter and contain no filament to burn out. And—more importantly, they have been shown to illuminate 200 milliseconds faster than conventional bulbs. If a vehicle behind you is traveling at 65 mph, this additional braking response time can reduce its stopping distance by over 19 feet.

The LS can be thought of as the pre-eminent collection of automotive details. Take, for example, the available Intuitive Parking Assist, which utilizes ultrasonic sensors to notify you of your proximity to objects in front of and behind you. And, of course, we haven't forgotten your rear-seat passengers. Such conveniences as vanity mirrors that unfold from the ceiling and available reading lights that swivel into position should keep them quite content.



<sup>11</sup>See page 15 for more information.

## 2006 LEXUS LS Ownership Experience



Vehicle shown with available equipment.

The Lexus ownership experience is a magnificent journey within itself. Measured not in mileage, but in moments. Flashes in time that delight you, inspire you. That in whatever way, enrich your life. You'll feel it in the peace of mind you get from our well-earned reputation for unparalleled vehicle quality and dependability. You'll feel it in the pride of knowing that Lexus puts a high priority on the wise use of natural resources as shown in the certification of every vehicle we build. And you'll feel it in our award-winning customer service, where every dealership goes to great lengths to accommodate you. This journey of Lexus ownership is the reason our owners are some of the most satisfied drivers on the road today. And why so many of them continue to return again and again.

### CUSTOMER SATISFACTION

Your total and complete satisfaction is our highest priority. Which is why you may find our dealerships provide such amenities as offices you can use for business, free pickup and delivery, service loaner vehicles, complimentary car washes, concierge services and even 24-hour emergency Roadside Assistance<sup>12</sup> for your first four years of ownership.

### RESPONSIBLE THINKING

As part of an effort to reduce emissions whenever possible, every Lexus vehicle built since 2004 has been certified as either a Low-Emission Vehicle (LEV), Ultra-Low Emission Vehicle (ULEV) or (ULEV II) or Super Ultra-Low Emission Vehicle (SULEV).

### VALUE/DEPENDABILITY/QUALITY

Our commitment to build the finest vehicles in the world has not wavered since our inception. Seen in such ways as projected low repair costs and high retained value, our pursuit of perfection has never been stronger.

<sup>12</sup>See page 15 for more information.

## 2006 LEXUS **LS** Options & Accessories

### OPTION PACKAGES

#### Ultra Luxury Selection®

Mark Levinson®<sup>3</sup> 11-speaker 240-watt<sup>13</sup> Premium Audio System with Automatic Sound Levelizer (ASL) and in-dash, single-feed, six-disc CD auto-changer ▪ Lexus voice-activated DVD Navigation System<sup>4</sup> with backup camera<sup>5</sup> and Bluetooth® technology<sup>6</sup> ▪ Dynamic Laser Cruise Control<sup>7</sup> ▪ Intuitive Parking Assist ▪ Adaptive Variable Air Suspension ▪ SmartAccess ▪ Perforated leather-trimmed interior ▪ Climate-comfort front and rear seats with heat/cool knob ▪ Power door closers ▪ Rear-door window sunshades ▪ Headlamp washers ▪ Laminated side glass ▪ **Rear-Seat Luxury Group:** Power-sliding seat with power headrest adjustment, memory and massager ▪ Air conditioner controls with air purifier ▪ Cool box ▪ Audio controls ▪ Swivel-type reading lamps

#### Ultra Luxury Selection with Pre-Collision System (PCS)<sup>8</sup>

Mark Levinson<sup>3</sup> 11-speaker 240-watt<sup>13</sup> Premium Audio System with Automatic Sound Levelizer (ASL) and in-dash, single-feed, six-disc CD auto-changer ▪ Lexus voice-activated DVD Navigation System<sup>4</sup> with backup camera<sup>5</sup> and Bluetooth® technology<sup>6</sup> ▪ Dynamic Radar Cruise Control<sup>7</sup> ▪ Pre-Collision System (PCS)<sup>8</sup> ▪ Intuitive Parking Assist ▪ Adaptive Variable Air Suspension ▪ SmartAccess ▪ Perforated leather-trimmed interior ▪ Climate-comfort front and rear seats with heat/cool knob ▪ Power door closers ▪ Rear-door window sunshades ▪ Headlamp washers ▪ Laminated side glass ▪ **Rear-Seat Luxury Group:** Power-sliding seat with power headrest adjustment, memory and massager ▪ Air conditioner controls with air purifier ▪ Cool box ▪ Audio controls ▪ Swivel-type reading lamps

#### Custom Luxury Selection

Mark Levinson<sup>3</sup> 11-speaker 240-watt<sup>13</sup> Premium Audio System with Automatic Sound Levelizer (ASL) and in-dash, single-feed, six-disc CD auto-changer ▪ Lexus voice-activated DVD Navigation System<sup>4</sup> with backup camera<sup>5</sup> and Bluetooth® technology<sup>6</sup> ▪ Dynamic Laser Cruise Control<sup>7</sup> ▪ Intuitive Parking Assist ▪ Perforated leather-trimmed interior ▪ Climate-comfort front seats with heat/cool knob ▪ Heated rear seats ▪ Power door closers ▪ Headlamp washers ▪ Laminated side glass

#### Premium Package

Intuitive Parking Assist ▪ Climate-comfort front seats with heat/cool knob ▪ Heated rear seats

#### Modern Luxury Package

Mark Levinson<sup>3</sup> 11-speaker 240-watt<sup>13</sup> Premium Audio System with Automatic Sound Levelizer (ASL) and in-dash, single-feed, six-disc CD auto-changer ▪ Lexus voice-activated DVD Navigation System<sup>4</sup> with backup camera<sup>5</sup> and Bluetooth® technology<sup>6</sup> ▪ Intuitive Parking Assist ▪ Front climate-comfort seats with heat/cool knob ▪ Rear-seat heaters

#### Sport Package with Polished-Finish Alloy Wheels<sup>14</sup>

Euro-tuned Sport Suspension ▪ 18 x 7.5 polished-finish alloy wheels with P245/45R18 tires<sup>15</sup>



### INDIVIDUAL OPTIONS AND ACCESSORIES

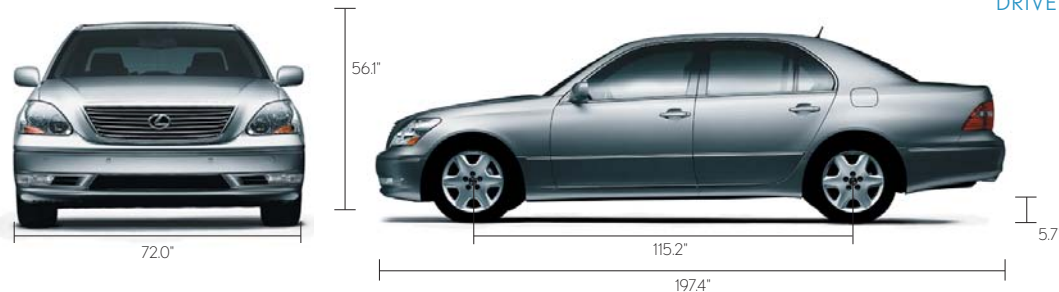
18 x 7.5 polished-finish alloy wheels<sup>15</sup> ▪ Lexus Chrome Wheels (17-in or 18-in)<sup>15</sup> ▪ All-season tires ▪ Smart Access ▪ XM® or SIRIUS Satellite Radio capability<sup>16</sup> ▪ All-weather floor mats ▪ Trunk mat ▪ Cargo net ▪ Ashtray/lighter kit ▪ Paint-protection film ▪ Car cover ▪ Wheel locks

<sup>3,4,5,6,7,8,13,14,15,16</sup>See page 15 for more information.

# 2006 LEXUS LS Specifications

## BODY, DIMENSIONS

Type	Five-passenger luxury sedan
Construction	Welded-steel unibody
Overall Length	197.4 in (5,015 mm)
Width	72.0 in (1,830 mm)
Height (with available Adaptive Variable Air Suspension)	58.7 in (1,490 mm) 57.9 in (1,470 mm)
Wheelbase	115.2 in (2,925 mm)
Ground Clearance (with available Adaptive Variable Air Suspension)	5.7 in (145 mm) 5.9 in (150 mm)
Curb Weight	3,990 lb (1,810 kg)
Fuel-Tank Capacity	22.2 gal (84 L)
Trunk Capacity (without rear A/C) (with rear A/C)	20.2 cu ft (572 L) 17.5 cu ft (495 L)
Headroom (front/rear)	38.1/37.9 in (967/963 mm)
Legroom (front/rear)	44.0/37.6 in (1,118/954 mm)
Shoulder Room (front/rear)	58.3/58.2 in (1,481/1,479 mm)



## CHASSIS

Vehicle Stability Control (VSC) <sup>10</sup>	Electronic system that monitors and helps control loss of traction in a turn using yaw-rate, deceleration, vehicle-speed and steering-wheel-angle sensors. Modulates engine power and applies individual brakes as necessary. Integrates Anti-lock Braking System (ABS), Brake Assist <sup>9</sup> and Traction Control (TRAC).
Suspension	Front: Independent, double-wishbone with coil springs, gas-pressurized shock absorbers with internal rebound springs and stabilizer bar.  Rear: Independent, double-wishbone with coil springs, gas-pressurized shock absorbers and stabilizer bar.
Steering	Vehicle-speed-sensing, progressive power-assisted rack-and-pinion. 3.5 turns, lock to lock.
Brakes	Four-wheel power-assisted discs, with four-sensor, four-channel Anti-lock Braking System (ABS), Electronic Brakeforce Distribution (EBD) and Brake Assist. <sup>9</sup> 12.4-in front, 12.2-in rear ventilated discs.
Wheels and Tires <sup>15</sup>	17 x 7.5-in alloy wheels with 225/55HR17 tires. Full-size spare with alloy wheel.  Optional: 17 x 7.5-in alloy or Lexus Chrome Wheels with 225/55HR17 tires. 17 x 7.5-in alloy or Lexus Chrome Wheels with 225/55HR17 all-season tires. 18 x 7.5-in polished-finished alloy or Lexus Chrome Wheels with 245/45R18 all-season tires. Euro-tuned Sport Suspension: Requires 18 x 7.5-in alloy wheels with 245/45R18 tires.

## DRIVETRAIN

Transmission	Six-speed sequential-shift automatic Electronically Controlled Transmission with intelligence (ECT-i)
Drive Wheels	Rear, with standard Vehicle Stability Control (VSC) <sup>10</sup>
Final Drive Ratio	3.77:1

<sup>10/15</sup> See page 15 for more information.



## 2006 LEXUS LS Specifications (Continued)

### ENGINE

Engine Type	90° V8, aluminum block and heads, certified Ultra-Low Emission Vehicle (ULEV)
Displacement	4.3 liters (261.9 cubic inches)
Valvetrain	Four cam, four valves per cylinder, with continuously Variable Valve Timing with intelligence (VVT-i)
Compression Ratio	10.5:1
Horsepower at RPM	278 hp @ 5,600 <sup>1</sup>
Torque at RPM	312 lb-ft @ 3,400 <sup>1</sup>

### PERFORMANCE

0 - 60 MPH Acceleration	5.9 seconds <sup>1</sup>
1/4-Mile Acceleration	14.5 seconds <sup>1</sup>
Top Track Speed	130 mph (electronically limited) <sup>1</sup>
Fuel Consumption	18/25 mpg city/highway <sup>8</sup>
Aerodynamic Drag Coefficient	0.26 with standard suspension or available Euro-tuned Sport Suspension (0.25 with available Adaptive Variable Air Suspension)
Turning Circle	35.8 ft

### STANDARD SAFETY

Driver's and front passenger's dual-stage airbag system (SRS)<sup>11</sup> • Front seat-mounted side airbags (SRS)<sup>11</sup> • Front and rear side curtain airbags (SRS)<sup>11</sup> • Driver's and front passenger's knee airbags (SRS)<sup>11</sup> • Three-point seatbelts for all seating positions, pretensioners with force limiters for front and rear outboard seats • Automatic Locking Retractor/Emergency Locking Retractor (ALR/ELR) seatbelts for all passenger seating positions. Emergency Locking Retractor (ELR) for driver's seat • Power height-adjustable front shoulder belt anchors • Child Restraint Seat (CRS) tether anchor brackets for rear outboard seating positions • Four-wheel ventilated power-assisted disc brakes • Four-sensor, four-channel Anti-lock Braking System (ABS) • Vehicle Stability Control (VSC)<sup>10</sup> • Traction Control (TRAC) • Brake Assist<sup>9</sup> • Electronic Brakeforce Distribution (EBD) • Lexus Tire Pressure Monitor System<sup>17</sup> • Highly rigid body structure with front and rear crumple zones • Side-impact door beams (front gusseted) • Reinforcements in pillars and doorsills • Impact-dissipating upper interior trim • High-Intensity Discharge (HID) headlamps with dynamic auto leveling • Adaptive Front Lighting System (AFS) • Daytime Running Lights (DRL) • Integrated foglamps • LED taillamps • Water-repellent windshield and front-door glass • Rain-sensing variable intermittent windshield wipers with mist cycle • Rear-window defogger with auto-off timer • Power-adjustable, auto-folding outside mirrors with defoggers, puddle lamps and auto tilt-down in reverse • Vehicle theft-deterrent and engine immobilizer system, with in-key transponder • First aid kit • Tool kit

### STANDARD LUXURY FEATURES

Golden bird's-eye maple or walnut interior trim • Leather-trimmed interior • Wood- and leather-trimmed steering wheel and shift knob • Steering-wheel-mounted cruise control, audio and display controls • Power tilt-and-telescopic steering column with automatic tilt-away • Liquid crystal multi-information console display • Lexus seven-speaker 178-watt<sup>19</sup> Premium Sound System with Automatic Sound Levelizer (ASL) and in-dash, single-feed, six-disc CD auto-changer • Bluetooth<sup>®</sup> technology<sup>6</sup> • In-glass antenna with FM-diversity system • Automatic on/off headlamps with 30-second auto-off delay • 14-way driver's (including dual function lumbar) and 10-way passenger's (including lumbar) power seats • Heated front seats • Height-adjustable headrests for all seats • Lexus Memory System to control power driver's seat (except lumbar), outside mirrors, driver's shoulder belt anchor height and steering wheel • Dual-zone automatic climate control with interior air filter, smog sensor and automatic recirculation mode • Power tilt-and-slide moonroof with one-touch open/close and sliding sunshade • Power windows with one-touch auto open/close feature • Exterior glass with UV reduction • Remote-linked window and moonroof opening • Retained accessory power for windows and moonroof • Power rear-window sunshade • Electrochromic (auto-dimming) inside rearview mirror with compass and outside mirrors • Power door locks • Multifunction, in-key remote entry system with rolling-code technology • Power trunk closer • Dual-compartment center console with accessory power outlet • HomeLink<sup>®</sup> universal transceiver to operate compatible garage, gate, home lighting and home security systems • Illuminated entry system with puddle lamps • Electroluminescent Instrumentation • Interior electronic trunk-lid and fuel-filler door releases • Lexus Personalized Settings (LPS)<sup>20</sup> to personalize electronic functions • Automatic on/off projector-beam headlamps with 30-second delay • Front- and rear-lighted vanity mirrors • Outside temperature gauge • Compass • Carpeted floor mats

# 2006 LEXUS LS Colors

## EXTERIOR COLORS



**BLACK CHERRY PEARL**  
Cashmere, Ash or Ecru\*  
or Black\* Leather



**BLUE ONYX PEARL**  
Cashmere, Ash or Ecru\* Leather



**MOONLIGHT PEARL**  
Cashmere, Ash or Ecru\* Leather



**MERCURY METALLIC**  
Ash, Black or Ecru\* Leather



**BRIARWOOD PEARL**  
Cashmere, Ecru\* or Black\* Leather



**FLINT MICA**  
Ash, Black or Ecru\* or Saddle\* Leather



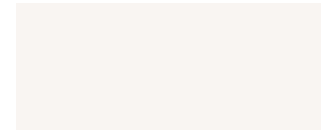
**CYPRESS PEARL**  
Cashmere, Ash or Ecru\* Leather



**MYSTIC GOLD METALLIC**  
Cashmere or Ecru\* Leather



**BLACK ONYX**  
Cashmere, Ash, Black, Ecru\*  
or Saddle\* Leather

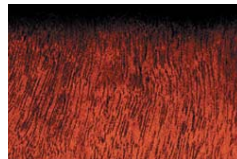


**CRYSTAL WHITE**  
Cashmere, Ash, Black  
or Ecru\* Leather

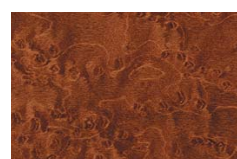
## CUSTOM LUXURY/ULTRA LUXURY SELECTIONS



**GOLDEN BIRD'S-EYE MAPLE**  
Ecru Leather  
with Perforated Inserts



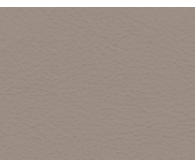
**ANTIQUE WALNUT**  
Saddle or Black Leather  
with Perforated Inserts



**GOLDEN BIRD'S-EYE MAPLE**  
Cashmere Leather<sup>†</sup>



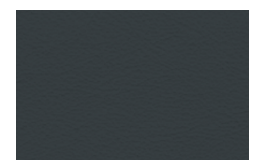
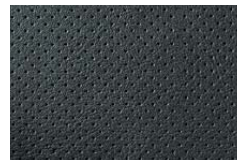
**WALNUT**  
Ash or Black Leather



Cashmere Leather\*



Ash Leather\*



Black Leather\*

## STANDARD LEATHER AND WOOD OPTIONS

\*Requires Custom Luxury or Ultra Luxury Option Selections.

<sup>†</sup>Comes with perforated inserts when equipped with optional front climate-comfort seats.  
See your Lexus dealer for exact vehicle colors.

# 2006 LEXUS LS Warranty

## WARRANTY

Four-year/50,000-mile Lexus Limited Warranty. Six-year/70,000-mile Powertrain Warranty. Six-year/unlimited-mileage Corrosion Perforation Warranty. All warranties with zero deductible. See the *LS Owner's Manual Supplement* at your Lexus dealer for details.

## FOOTNOTES & DISCLAIMERS

1. Ratings achieved using the required premium unleaded gasoline with an octane rating of 91 or higher. If premium fuel is not used, performance will decrease. 2. These performance capacity figures are for comparison only, and were obtained with prototype vehicles by professional drivers using special safety equipment and procedures. Do not attempt. 3. Mark Levinson is a registered trademark of Harman International Industries, Incorporated. 4. The Lexus DVD Navigation System is designed to assist in locating an address or point of interest. Discrepancies may be encountered between the system and your actual location. Changes in street names, road closures, traffic flow or other road system changes may affect the accuracy of the mapping software. Rely upon your common sense to decide whether or not to follow a specified route. Detailed coverage not available in every city. Optional periodic geographic updates available at an additional cost. See your Navigation System Owner's Manual and your Lexus dealer for further details. 5. The backup camera, available only with the navigation system, does not provide a comprehensive view of the entire rear area of the vehicle. You should also look around outside your vehicle and use your mirrors to confirm rearward clearance. Cold weather will limit effectiveness and view may become cloudy. 6. While there are several Bluetooth® phones in the market, Lexus recommends the phones listed on its Web site because they have been tested and meet Lexus' high standards for voice quality and functionality. Note that the recommendation of Lexus is not a warranty of the performance for any phone and that some problems may occur with any type of handset based on the service coverage available in your area. 7. Dynamic Laser or Dynamic Radar Cruise Control was designed to assist the driver and is not a substitute for safe and attentive driving practices. Please see your Owner's Manual for important cautions and instructions. 8. The Lexus Pre-Collision System is designed to help reduce the crash speed and damage in certain frontal collisions only. It is not a collision avoidance system and is not a substitute for safe and attentive driving. System effectiveness depends on many factors, such as speed, driver input and road conditions. Please see your Owner's Manual for further information. 9. Brake Assist is designed to help the driver take full advantage of the benefits of ABS. It is not a substitute for safe driving practices. Braking effectiveness also depends on proper brake-system maintenance and tire and road conditions. 10. Lexus Vehicle Stability Control (VSC) is an electronic system designed to help the driver maintain vehicle control under adverse conditions. It is not a substitute for safe driving practices. Factors including speed, road conditions and driver steering input can all affect whether VSC will be effective in preventing a loss of control. Please see your Owner's Manual for further details. 11. The Lexus driver's, and front passenger's airbags, front seat-mounted side airbags, driver's and front passenger's knee airbags and side curtain airbags are Supplemental Restraint Systems (SRS). The driver's and front passenger's airbags and driver's and front passenger's knee airbags are designed to deploy in severe (usually frontal) collisions where the magnitude and duration of the forward deceleration of the vehicle exceed the design threshold level. The side airbags and side curtain airbags are designed to deploy in certain types of severe side-impact collisions. In all other accidents, the airbags will not deploy. To decrease the risk of injury from a deploying airbag, always wear your seatbelt, sit upright in the middle of the seat, and do not lean against the door. Do not put objects in front of an airbag or around the seatback. Do not use a rearward-facing child seat in any front passenger seat. The force of a deploying airbag SRS may cause serious injury or death. Please see your Owner's Manual for further instructions. 12. Coverage only available in the continental U.S. and Canada. Please see your local Lexus dealer for details on our Roadside Assistance program. 13. Continuous average power, all channels driven, at 0.01% THD; 20-20,000 Hz. 14. Sport package not available with Custom Luxury Selection or Ultra Luxury Selection packages. 15. Tires fitted with 18 x 7.5-in and 17 x 7.5-in wheels are expected to experience greater tire wear than conventional tires. Tire life may be substantially less than 20,000 miles, depending on driving conditions. 16. Satellite Radio requires XM or SIRIUS capacity, receiver and monthly service fee. See your Lexus dealer for further details. Reception of the satellite signal may vary depending on location. All fees and programming subject to change. Subscriptions subject to the terms and conditions available at [www.xmradio.com](http://www.xmradio.com) or [www.sirius.com](http://www.sirius.com). Available only in the 48 contiguous United States. 17. The Lexus Tire Pressure Monitor System alerts the driver when tire pressure is critically low. For optimal tire wear and performance, tire pressure should be checked regularly with a gauge; do not rely solely on the monitor system. See your Owner's Manual for details. 18. EPA-estimated ratings: 18 city / 25 highway mpg. Actual mileage may vary. 19. 178 watts at 0.1% THD. 20. The Lexus Personalized Settings (LPS) Program is a one-time, complimentary offer for new 2005 model year vehicles or newer purchased or leased from 10/1/04 and beyond, as well as 2006 model year vehicles, up to 12 months from the date the vehicle is sold to the first retail purchaser or the date it is first used as a demonstrator, lease or company car, whichever occurs first. Please see your Lexus dealer for more information.

Some vehicles shown with optional equipment. Optional equipment listed may not be available separately or in all regions. See your Lexus dealer for details. Lexus reminds you to wear seatbelts, secure children in rear seat, obey all traffic laws and drive responsibly.

For more information, call 800-USA-LEXUS (872-5398). To learn more about your financing options, contact your Lexus dealer or call Lexus Financial Services at 800-874-7050.

All photographs appearing in this e-brochure are the copyrighted property of the photographers contracted by or on behalf of Lexus and may not be reproduced in any way whatsoever without prior written permission from both Lexus and the applicable photographer(s) or their authorized agent(s).

